

Kingsbrook Series

CONTEMPO
GALLERY
STANDARD



Silvercrest 

**"For over forty years we have
focused on providing our customers
with award-winning designs and
the highest quality in the industry."**

**Steve Harwood,
Sales & Marketing Manager
Silvercrest Homes**



Shown with optional features

About us

Made for living

"Simply Builds the Best" has been Silvercrest's motto for decades. It captures our determination to provide the most exciting combination of design and construction quality for homeowners throughout the West. This commitment to be the best has earned Silvercrest a reputation as the finest in factory-built housing. Time and again we see prospective homeowners unwilling to settle for anything less than the best: a new Silvercrest home.

Comforts of home

Beyond just building you a house, we're committed to providing you and your family with a home to make memories in that will last a lifetime. Somewhere you can feel secure. A place you can call your own. A home that fits your lifestyle and has your own personal touch. Whether you're an active young family constantly on the go or empty-nesters ready to simplify, just relax – we have a home that's right for you.

Your perfect home

Our vast collection of floor plans and color options give you the freedom to express your personal style and fit your home around your life. Your local Silvercrest retailer will help you find the right floor plan and guide you through the process of selecting the options and décor that will reflect your own personal touch.



KB-34

60' x 30' 4"
3 bed-2 bath
1763 sq. ft.

Contempo SERIES



MHI NATIONAL INDUSTRY AWARD WINNER
NEW MANUFACTURED
HOME DESIGN



OPTIONAL MASTER BATH A



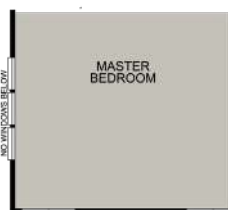
OPTIONAL MASTER BATH B



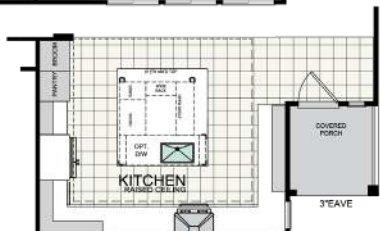
OPTIONAL MASTER BATH C



OPTIONAL ENTERTAINMENT CENTER W/ CLEARSTORY



OPTIONAL MASTER BED WINDOWS



OPTIONAL KITCHEN



Photos reflect optional features



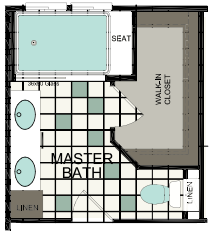
KB-66

61'-4" x 26'-8"
3 bed-2 bath
1561 sq. ft.

Contempo SERIES

*Award
WINNING*

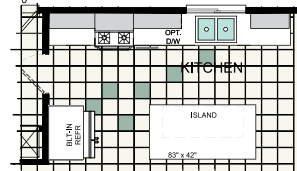
MHI NATIONAL INDUSTRY AWARD WINNER
NEW MANUFACTURED
HOME DESIGN



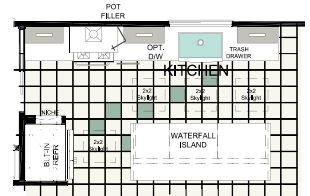
OPTIONAL
RAINFOREST SHOWER



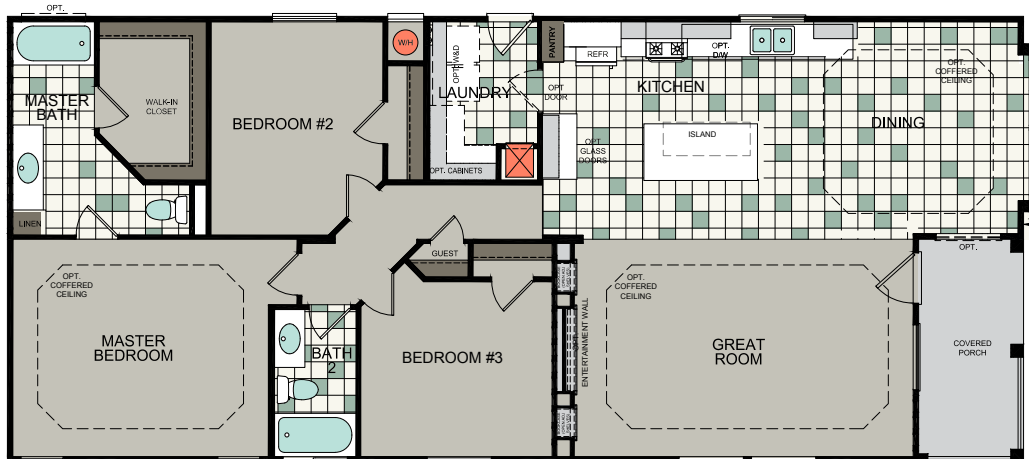
OPTIONAL WALK-IN
PANTRY



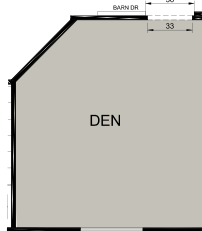
OPTIONAL KITCHEN



OPTIONAL DISPLAY
MODEL KITCHEN



16' OVERHANG



OPTIONAL DEN



OPTIONAL
ENT CENTER
W/LINEAR F/P



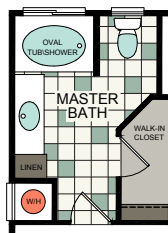
Photos reflect optional features



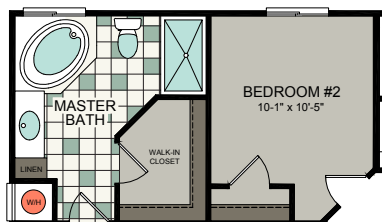
KB-65

60' x 26'8"
3 bed-2 bath
1502 sq. ft.

GALLERY SERIES



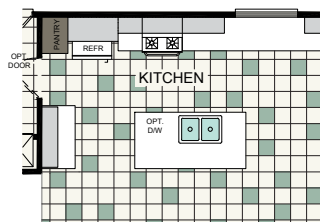
OPTIONAL
MASTER BATH - A



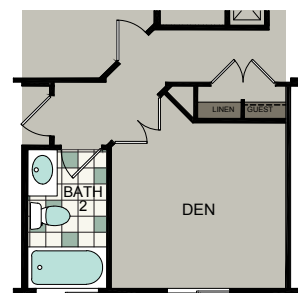
OPTIONAL MASTER BATH-B



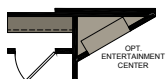
OPTIONAL
LAUNDRY ROOM



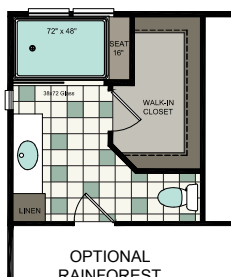
OPTIONAL KITCHEN



OPTIONAL DEN



OPTIONAL
GREAT ROOM



OPTIONAL
RAINFEST
MASTER BATH



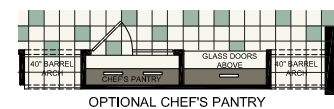
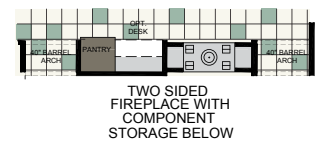
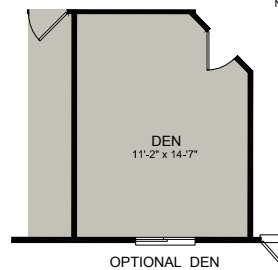
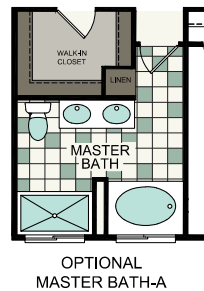
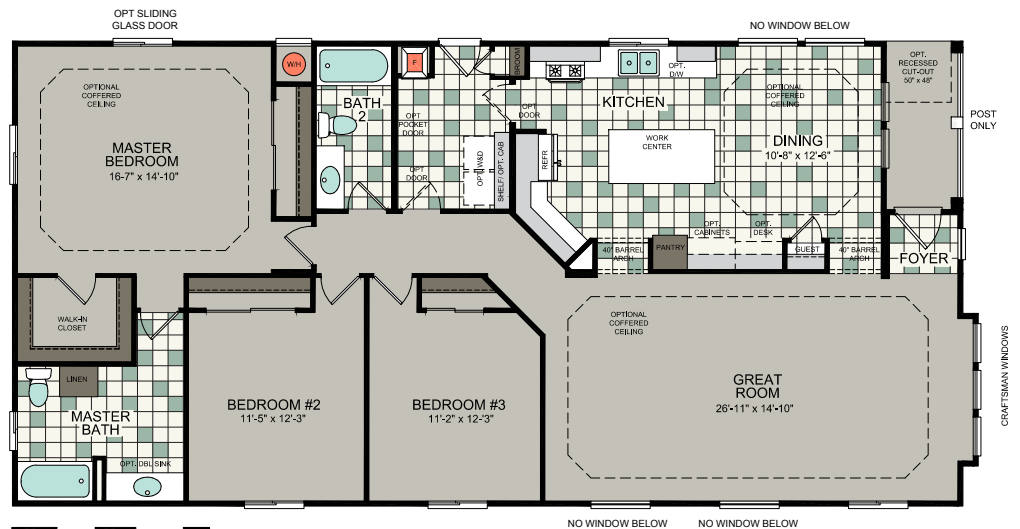
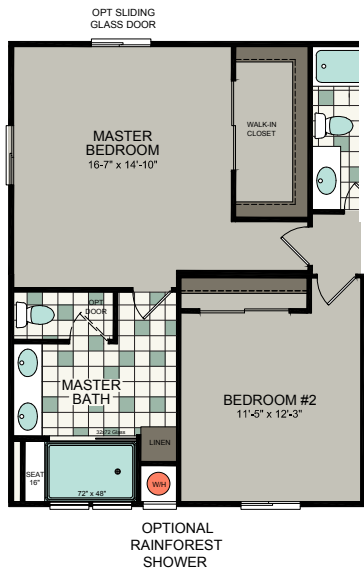


Photos reflect optional features



GALLERY

SERIES





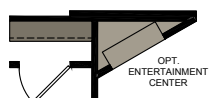
Photos reflect optional features



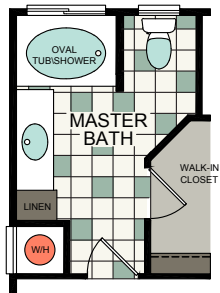
KB-62

60' x 26'8"
3 bed-2 bath
1487 sq. ft.

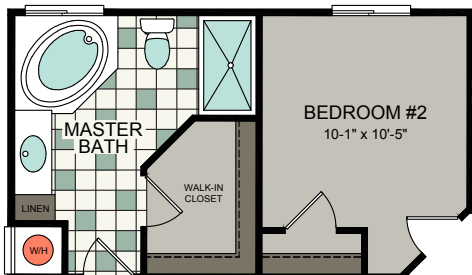
GALLERY SERIES



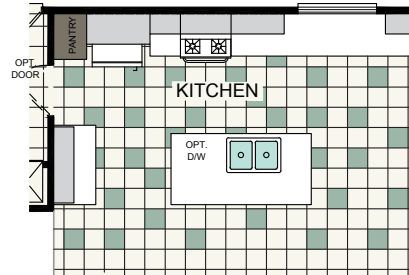
OPTIONAL
GREAT ROOM



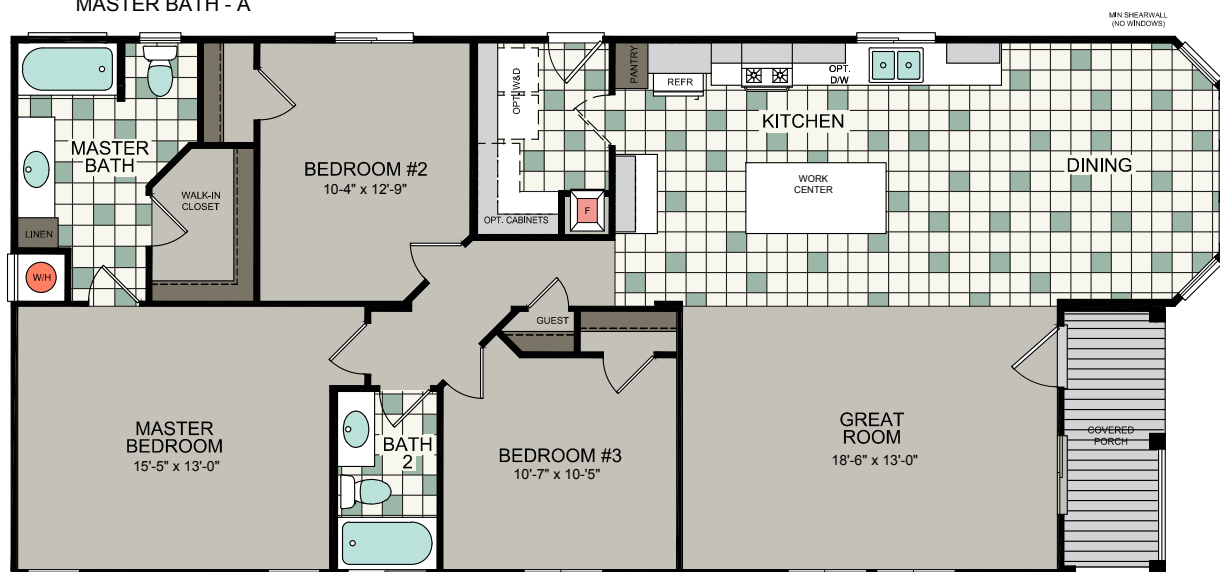
OPTIONAL
MASTER BATH - A



OPTIONAL MASTER BATH-B



OPTIONAL KITCHEN





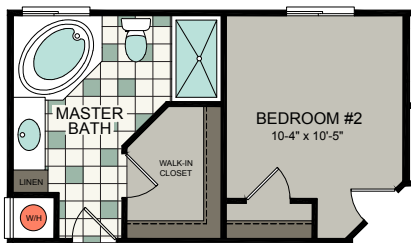
Photos reflect optional features



KB-59

57'8" x 26'8"
3 bed-2 bath
1493 sq. ft.

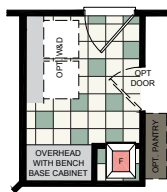
STANDARD SERIES



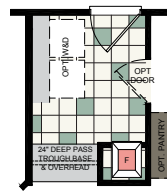
OPTIONAL MASTER BATH-B



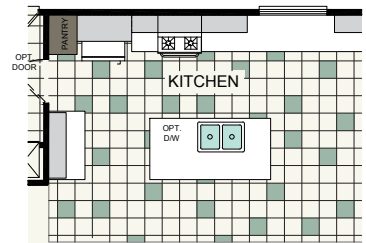
OPTIONAL
LAUNDRY ROOM-A



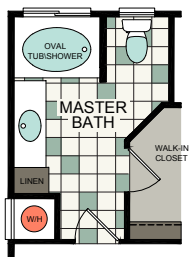
OPTIONAL
LAUNDRY ROOM-B



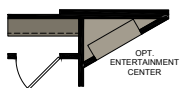
OPTIONAL
LAUNDRY ROOM-C



OPTIONAL
KITCHEN



OPTIONAL
MASTER BATH - A



OPTIONAL
GREAT ROOM



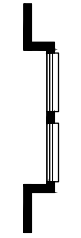
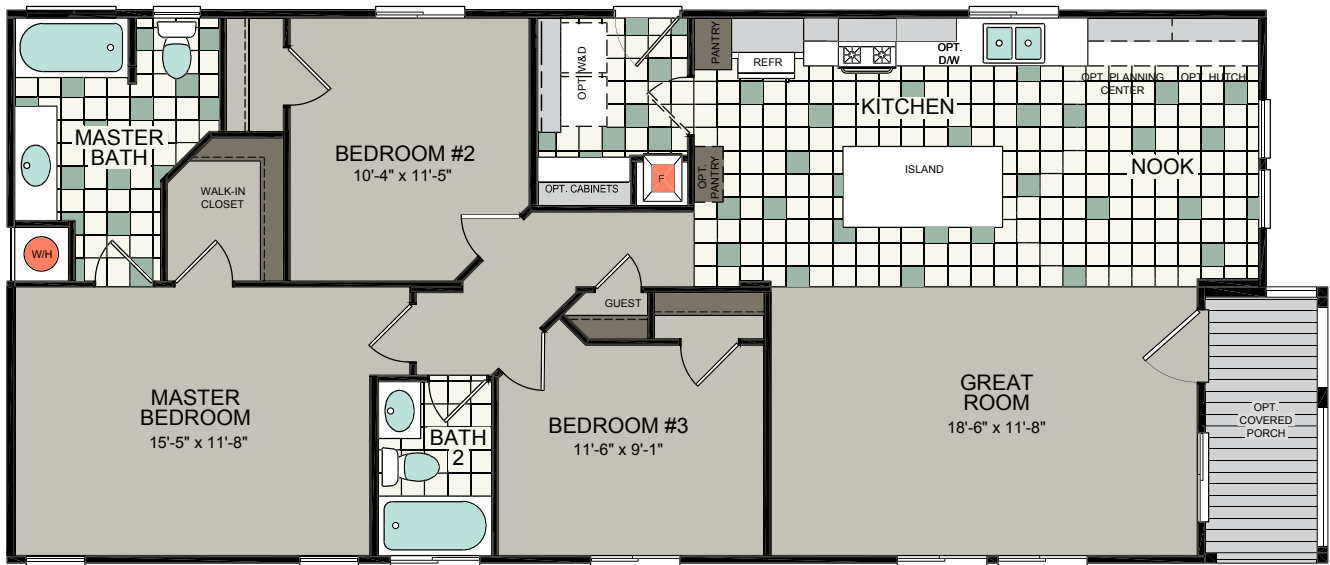
OPTIONAL
DINING ROOM
WINDOWS

9' FLAT CEILING
THROUGHOUT
4" EXTERIOR WALL

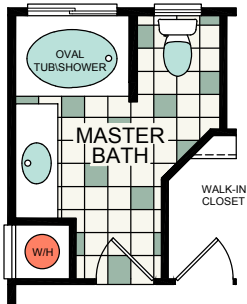
KB-54

54'8" x 24'
3 bed-2 bath
1280 sq. ft.

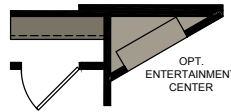
STANDARD SERIES



OPTIONAL
NOOK
WINDOWS



OPTIONAL
MASTER BATH - A



OPTIONAL
GREAT ROOM



All you need



Experienced

We have been building homes since 1969. Over half of our workforce possesses at least a decade of experience.

An iconic brand name

Many associate Silvercrest with high-end/high quality homes. Started by a group of retailers who wanted to purchase high-end/high quality product, they made it their mission to start a company that would do just that. Retail customers know and ask for us by name.

Brand name components

Our size allows for maximum purchasing power with the best suppliers in the housing industry. Nationwide brand names such as Whirlpool®, KitchenAid®, Mohawk® carpet and Trex® are just a few of our partners. Quality materials means a better built home for you!

High customization

Homebuyers can customize both interiors and exteriors to a greater level than any of our competitors. Our flexible workforce can accommodate most any customer request.

Silvershield 7-year warranty

We are the only company in the Western U.S. that offers a 7-year warranty on every one of our homes, giving our customers the peace of mind they deserve.

Focus on "green" offerings

We offer Energy Star® as a standard or an option in all of our models. We recycle 90% of our material waste and continually look for new opportunities to save even more.

Standard features

Construction & Specifications

- California CARB II Compliant Home
- Includes Silvercrest's "Silvershield" Seven-Year Warranty (Now Also Includes Structural Coverage!)
(Deductibles apply, claims processed by CornerStone United)
- 20 lb. Roof Load
- R-11 Floor Insulation
- R-13 Wall Insulation
- R-22 Ceiling Insulation
- All Structural Lumber is Kiln-Dried for Higher Quality
- 2x6 Transverse Floor Joists – 16" O.C.
- 2x4 Exterior Wall Studding – 16" O.C.
- White Vinyl-Framed Dual-Glazed Windows with Low-E Glazing
- Energy Star® Rated Windows with Screens on All Opening Windows
- PEX Water Lines
- Water Shut-Off Valves at All Sinks & Toilets
- Fire-Rated Drywall Ceilings
- ½" Drywall on All Interior Walls
- ¾" OSB Floor Decking
- 9' Sidewall Height
- 100 Amp Electrical Service
- 30-Gallon Gas Water Heater
- Gas Down-Flow Furnace
- Digital Thermostat with Programmable Settings
- Steel Outriggers on Frames for Exterior Wall Support

Exterior

- Semi-Gloss Exterior Paint with Three Color Design Featuring High-Quality PPG® Paint
- Class A Fire Rated Architectural Shingles with Manufacturers 30-Year Limited Warranty
- High Wind Nailing Pattern on All Shingles (6 Nails Per Shingles vs. 4 Staples)
- (2) Exterior GFI Protected Patio Outlets (Locations Vary Per Plan)
- 16" Front End Wall Overhang – Most Models
- Optional Sidewall Eaves (Construction Modifications Can Affect Standard Eave Design)
- 6-Panel 36" Vinyl-Covered Insulated Entry Door with Deadbolt Security Lock
- 6-Panel 32" Vinyl-Covered Insulated Rear Entry Door
- All Exterior Doors with Deadbolts Feature a Metal Reinforced Security Plate on Door Jamb for Added Security
- Cement Fiber Exterior Siding Materials with Manufacturers Limited Warranty
- Dropside Hardboard Lap Accent on Front End Walls
- 8" Hardboard Fascia & 4" Hardboard Corner & Window Trim

Interior Features

- 9' High Flat Ceilings Throughout with Stacked-Style Upper Windows in Main Living Areas
- ½" Drywall on Walls
- Textured Finish on Walls & Ceilings with Square Corners on Walls and Windows Openings
- Multiple Interior Wall & Ceiling Paint Selections Featuring PPG® Paint
- 2-Panel Passage & Wardrobe Doors Throughout
- Dramatic Sculptured Passage Door Casings
- 3 ½" Sculptured Floor Moldings Throughout (Optional 5 ¼" Upgrade Also Available!)
- (3) Mortised Hinges on Passage Doors
- Lever-Style Passage Door Locksets – Satin Nickel Finish
- 2" Faux Wood Blinds with Matching Wood Valance Throughout (Except Baths, Utility Room)
- Hand-Finished Wood Cabinets Throughout with Solid End Panel Construction with Adjustable Shelves in Overhead Cabinets
- Hidden Hinges on Cabinet Doors with Soft Close Feature
- Side-Mounted Metal Drawer Guides
- Rocker-Style Light Switches with Matching Style Wall Outlets
- Copper Wiring Throughout
- Metal Shut-Off Valves at All Fixtures
- White Wood Window Casings Throughout (Except Bath Areas)

Floor Coverings

- Group 1 Carpet in Living Areas
- ½" Rebound Carpet Pad
- Easy-Clean Quality Vinyl in Kitchen, Baths, Utility, Nook Areas (Per Plan)

Lighting

- Satin Nickel or Bronze Lighting Fixtures
- Designer Selected Chandelier in Formal Dining Areas
- Designer Selected Light Above Bath Sink Areas
- Switched Wall Outlet for Lamp Lighting in Living Room & All Bedrooms (Wall Outlet Designated by Being Installed Upside Down)
- Recessed Can Light Above Kitchen Sink Area

Due to continuous product development and improvement, prices, specifications, and materials are subject to change without notice or obligation. Square footage and other dimensions are approximate. Exterior images may be artist renderings and are not intended to be an accurate representation of the home. Renderings, photos and floor plans may be shown with optional features or third-party additions.

Kitchen

- Whirlpool® Kitchen Appliances – White or Black
- 30" Gas Freestanding Range
- 18 Cubic Foot Double-Door Refrigerator
- 30" Lighted Range Hood Vent
- Chrome Finish Dual-Handle Faucet with Manufacturers Limited Lifetime Warranty on Finish & Parts
- Extended Height Overhead Cabinets Providing Extra Storage Space
- Adjustable Shelves in Overhead Cabinets Finished with White Lined Cabinet Interiors
- Self-Rimming Ledge-Style 8" Sink – Stainless Steel Finish for Durability & Long-Life
- Crown Molding on All Overhead Cabinets
- Toe-Kick Heat Register in Base Cabinets (Per Plan) Allowing Easier Furniture Placement
- Drawer Over Door Cabinet Design
- Corian® Finish Countertops with 4" Backsplash

Master Bath

- 60" One-Piece Fiberglass Tub/Shower
- Corian® Countertops with 4" Backsplash
- China Self-Rimming Sinks
- Satin Nickel or Bronze Lighting Fixtures
- Satin Nickel Towel Bar & Paper Holder
- Elongated Low-Flow Water-Saving Toilets
- Chrome Finish Dual-Control Faucets with Manufacturers Limited Lifetime Warranty on Finish & Parts
- Single-Lever Tub/Shower Diverter with Temperature Balancing Valve to Prevent Water Temperature Fluctuations that Can Cause Scalding with Manufacturers Limited Lifetime Warranty on Finish & Parts
- Ceiling Vented Exhaust Fan
- Wall Mount Three-Arm Light Fixtures Above Sinks

Bath Two

- 60" One-Piece Fiberglass Tub/Shower
- Easy Care Vinyl Floor
- China Self-Rimming Sinks
- Corian® Countertops with 4" Backsplash
- Elongated Low-Flow Water-Saving Toilets
- Wall Mount Three-Arm Light Above Sink
- Towel Bar & Paper Holder
- Dual-Control Sink Faucet with Manufacturers Limited Lifetime Warranty on Finish & Parts
- Single-Lever Tub/Shower Diverter with Temperature Balancing Valve to Prevent Water Temperature Fluctuations that Can Cause Scalding with Manufacturers Limited Lifetime Warranty on Finish & Parts

Silvercrest "Smart Choice" Options for Your "Smart Design" Homes

- 2'x6' Exterior Wall Studding with R-19 Insulation for Additional Energy Savings
- Noritz® Energy-Saving Tankless Gas Water Heater for Virtually Endless Hot Water at Every Fixture
- Reflective Roof Sheathing for a Cooler Roof Attic Area – Saving You Money on Heating & Cooling Costs
- Solar Tube Skylights that Light Home Interior & Save Energy Costs
- Prep Raceways for Wall Mounted Speaker Locations
- WUI Fire Zone Construction Package for Homes Located in California Designated Fire Zones
- Fire Sprinkler Systems
- Designer Selected Tile for Showers & Backsplashes with Modern "Schluter Edging System" Feature

Standards Specific to the "GALLERY Series"

- Covered Porch with Architectural Archways & Trex Decking
- Craftsman® Fiberglass Front Door
- Upgraded Bay Window Treatment or 3-Window Boxed Bay Treatment on Front Wall (Per Plan)
- Architectural Shingles
- Transverse Gable Roof Line
- Wraparound Lap Siding on Front Wall with 5/4" Dimensional Trim

Standards Specific to the "CONTEMPO Series"

- Architectural Shingles
- Transverse Gable Roof Line with Contemporary Design
- Wraparound 2-3/4" Urban Lap-Siding on Front Wall with 5/4" Dimensional Trim
- Covered Porch Trex® Decking
- Vista Windows in Dining Room, Entry, and Living Room
- 16" & 12" Eaves per Plan
- Kitchen Window at Countertop Height
- Boxed-out Exterior Dining Room Windows
- 8 ft Rainglass Entry Door

“...every home we build undergoes rigorous quality inspections to ensure we’re providing you with nothing but the best.”

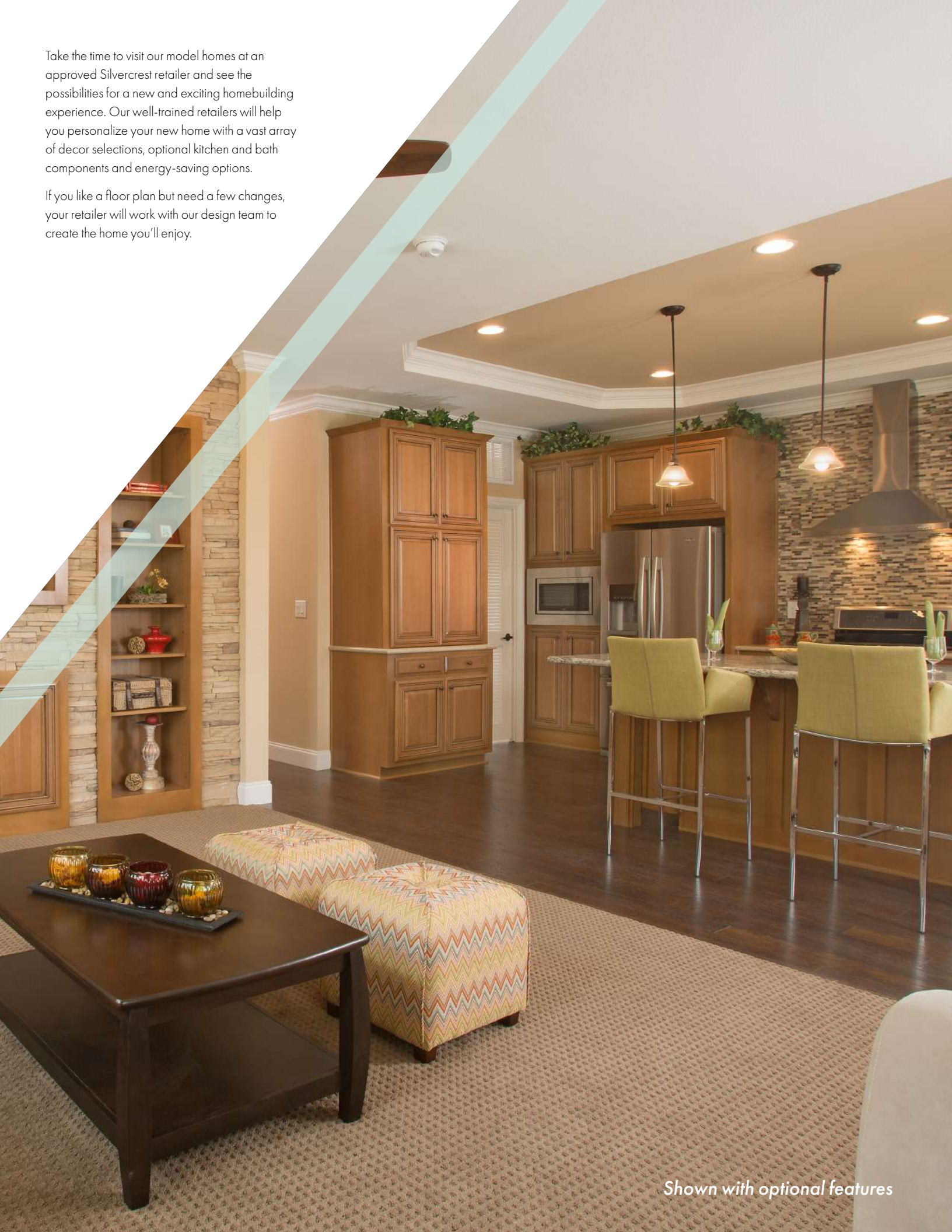
Quality – through and through

We build each and every home to meet or exceed a strict national or state building code, and we set even higher standards for ourselves. Focusing on the things you don’t see as well as the things you do, we monitor and inspect our homes at every stage of construction. From the plumbing system to the electrical wiring, from the kitchen cabinets to the closets in the bedrooms – every home we build undergoes rigorous quality inspections to ensure we’re providing you with nothing but the best.

To build the best, we use the best. To meet your expectations of quality – and ours – we use only the highest-quality building materials and trusted national brand names. From insulation and fixtures to flooring and appliances, we only buy components from suppliers who share our commitment to quality. By using the best, we’re confident we can build you a home with the lasting value you’ll appreciate for years to come. Your housing consultant can tell you more about the specific brands used in our homes.

Take the time to visit our model homes at an approved Silvercrest retailer and see the possibilities for a new and exciting homebuilding experience. Our well-trained retailers will help you personalize your new home with a vast array of decor selections, optional kitchen and bath components and energy-saving options.

If you like a floor plan but need a few changes, your retailer will work with our design team to create the home you'll enjoy.



Shown with optional features



299 N. Smith Avenue
Corona, CA 92880

silvercrest.com

